

SERVER

• E S S E N T I A L S •

Single Merchandisers Supreme™ Topping Warmers

SPECIFICATION SHEET

FAST FACTS

Supreme™ Topping Warmers precise temperature control and even heat ensures more warm cheese or dessert topping is dispensed from each #10 food can or 3 qt jar. Pouched toppings make operations easier with virtually no mess, product breakdown or waste.

APPLICATION

- Keep your concessions moving and food costs under control with portioned toppings of Hot Fudge, Caramel or Cheese Sauce in a Server Supreme™ topping warmer

DETAILS

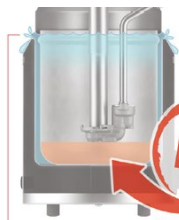
- Toppings are served at their peak flavor with a temperature-controlled thermostat to turn the wrap-around heating element on or off as needed; plus, the heated spout ensures safety when serving potentially hazardous foods
- Stainless steel warmers with pump serve 1 oz portions and adjust in 1/8 oz increments for [Portion Optimization™](#)
- Serve from a 3 qt Jar 94009, #10 topping can or 48-oz pouch with 16 mm center fitment* (pouch model)
- Water fill lines, in 81140, prevent overflow accidents; pouch model eliminates water-level monitoring and vapor damage to topping as aluminum pouch support evenly transfers heat without the need for a water bath
- Create LTO interest with (3) merchandising graphics: Hot Fudge, Caramel and Cheese Sauce (included) or [download a graphic template](#) for your custom design



Critical to Proper Operation | Water-Bath Spacer 82063 (incl. with 81140)

Water heats all sides of vessel with spacer

With Spacer



Spacer prevents water overflow into the food

NO!
Without Spacer

81140 Option: SST Jar 94009 & Storage Lid 94008



Magnetic Decal Set 86749



3-in-1 merchandiser – the epitome of versatility

MERCHANDISING TOPPING WARMERS: FSPW-SS

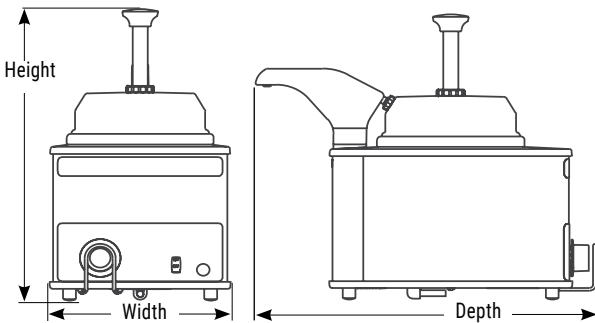
Server Supreme™ FSPW-SS is a stainless steel, rethermalizing warmer with pump and heated spout warmer, plus (3) magnetic merchandising signs for Hot Fudge, Caramel and Cheese Sauce. An adjustable, temperature-sensing thermostat controls the 500 watt, wrap-around heating element, turning it off and on as needed. An ON/OFF rocker switch controls power. The water-bath model, 81140 serves from a #10 can or 3 qt stainless steel jar (94009 jar sold separately). Pouch model includes aluminum pouch support to evenly transfer heat without a water-bath and features a pouch-piercing pump for a sealed connection. 120V AC 4.3-A, 517 Watts, NEMA 5-15P plug with 72 in power cord. 2-year warranty.



*SPECIAL POUCHED TOPPING NOTE

Our [Pouched Product Guide](#) is a snapshot of food manufacturers using Server Pouched Dispensing Products. A general market supplier of cheese in this packaging is not known at this time. Be sure to contact your food distributor for the specialized 48 oz topping pouches with a 16 mm center fitment; currently packaged by:

- Ghirardelli Chocolate Company
- The Hershey Company
- Lyons Magnus
- Masterson Company



MERCHANDISING TOPPING WARMERS

order amt	model/item	description	capacity	dims (H x W x D)	plug	electrical	watts	weight
<input type="checkbox"/>	FSPW-SS 81140	merchandising topping warmer with pump 81320	#10 can, 3 qt jar	15 7/16" x 8 15/16" x 15 1/2"		120 V AC 4.3 A	517	15 lb
<input type="checkbox"/>	FSPW-SS 100066	merchandising topping warmer with piercing pump 81185	48 oz pouch with 16-mm center fitment					19 lb

ACCESSORIES

order amt	item	description	order amt	item	description
<input type="checkbox"/>	94009	stainless steel 3 qt jar	<input type="checkbox"/>	81185	pouch-piercing, topping pump
<input type="checkbox"/>	94008	abs plastic, jar storage lid	<input type="checkbox"/>	86749	magnetic decal set
<input type="checkbox"/>	82063	water-bath spacer (for 81140)			
<input type="checkbox"/>	81320	topping pump (for 81140)			
<input type="checkbox"/>	81184	Can2Pouch™ conversion kit			

KEEP YOUR MENU FRESH & FUN WITH MERCHANDISING TOPPING WARMERS
 SERVER-PRODUCTS.COM | 800.558.8722 | 262.628.5600