



There's only one #1™

Project \_\_\_\_\_

Item # \_\_\_\_\_

Quantity \_\_\_\_\_

# Toast-Qwik® Electric Conveyor Toaster

Model: TQ3-10

Hatco's industry-leading Toast-Qwik® Conveyor Toasters have been completely redesigned to provide a great new look, and increased production capabilities. They continue to provide the best reliability, flexibility and value of any conveyor toaster available!

## Standard features

- Patented ColorGuard sensing system which monitors chamber temperature and adjusts conveyor speed to ensure consistent toast results - even in your busiest periods
- Power Save mode activates manually by pressing the Power Save Button above the leaf symbol
- Features an Air Intake Filter Screen which is removable for easy cleaning
- Crumb tray is removable
- 2" (51 mm) high opening
- DC stepper motor provides wide range of linear and precise speed control
- Available in *Designer Black* finish to blend with any decor
- 1780 watts in 120, 208 or 240 provides about 250 slices per hour
- Double-sided or single-sided toasting at the touch of a button



TQ3-10 available in Designer Black only



Air Intake Filter Screen

Power Save mode button above leaf symbol

**For operation, location and safety information, please refer to the Installation & Operating Manual.**



ANSI/NSF 4

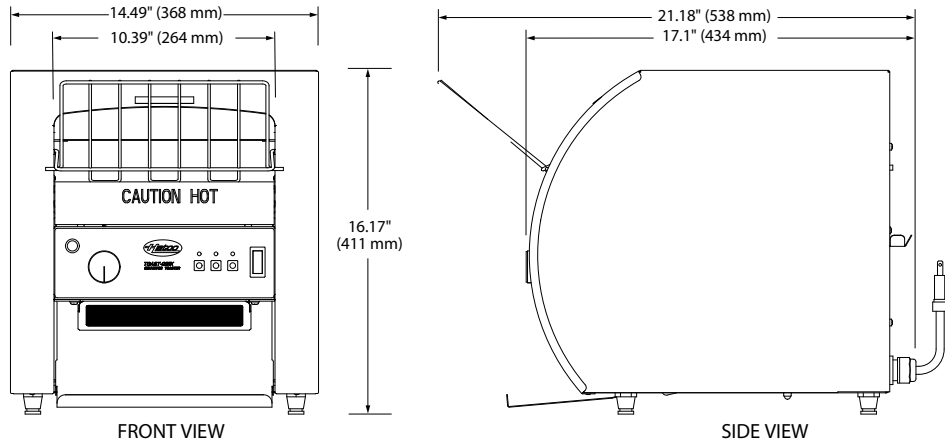
**HATCO CORPORATION** | P.O. Box 340500 Milwaukee, WI 53234-0500 U.S.A.  
(800) 558-0607 | (414) 671-6350 | [www.hatcocorp.com](http://www.hatcocorp.com) | [support@hatcocorp.com](mailto:support@hatcocorp.com)



# Toast Qwik® Electric Conveyor Toaster

Model: TQ3-10

## TQ3-10



## SPECIFICATIONS Toast Qwik Conveyor Toaster

Model	Opening Dimensions (W x H)	Dimensions (W x D x H)	Volts Single Phase	Hertz	Watts	Amps	Plug	Ship Weight*
TQ3-10	10.39" x 2" (264 x 51 mm)	14.49" x 21.18" x 16.17" (368 x 538 x 411 mm)	120	50/60	1780	14.8	NEMA 5-15P•	54 lbs. (25 kg)
			208	50/60	1780	8.6	NEMA 6-15P	
			240	50/60	1780	7.4	NEMA 6-15P	

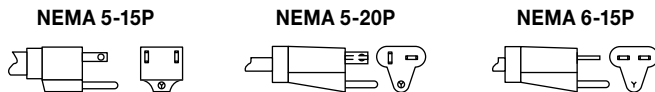
\* Shipping weight includes packaging.

• NEMA 5-20P for Canada.

## CORD LOCATION

Lower right corner on back of unit.

## PLUG CONFIGURATIONS



## PRODUCT SPECS Conveyor Toaster

The electric Toast-Qwik® Conveyor Toaster with Color Guard sensing system shall be a Hatco model ... as manufactured by the Hatco Corporation, Milwaukee, WI 53234 U.S.A.

The Toaster shall have the capacity to toast up to ... pieces per hour and it shall be rated at ... kW, ... volts, single phase. The toaster shall be of Powdercoated steel

design and shall include double or single sided toasting capabilities, manual power save mode, a removable/cleanable air intake filter screen, variable speed control and power save mode. The toaster will have metal sheathed heating elements and factory attached UL listed cord and plug.

Warranty consists of 24/7 parts and service assistance (US and Canada only).

**HATCO CORPORATION** | P.O. Box 340500 Milwaukee, WI 53234-0500 U.S.A.  
(800) 558-0607 | (414) 671-6350 | [www.hatcocorp.com](http://www.hatcocorp.com) | [support@hatcocorp.com](mailto:support@hatcocorp.com)